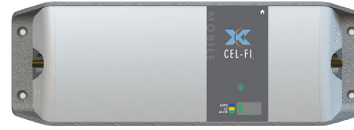




# Cel-Fi GO Mobile Smart Signal Repeater Bundles

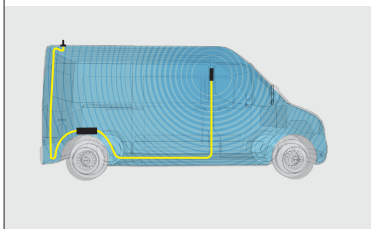
## For Vehicles, RVs, Trucks & Marine Vessels

The Cel-Fi GO Mobile Smart Signal Repeater is the best solution available on the market today for addressing the universal challenge of poor cellular coverage on the road. Attach one of the following donor and server antenna combinations to the Cel-Fi GO Mobile Smart Signal Repeater to deliver the best voice/data wireless performance for vehicles and boats on the move.



### Cel-Fi GO Mobile

- 3G / 4G / 4GX Voice and Data
- Multi-User Mobile Coverage
- Multi-Band Support
- Indoor / Outdoor IP54 Rated
- Network Safe



### Vehicle Bundle

The Cel-Fi GO Vehicle bundle includes the Cel-Fi GO Mobile, Cel-Fi Mobile Donor Antenna, and the Cel-Fi Mobile Server Antenna. Multi-user and multi-carrier support, plus easy carrier-switching available through the Cel-Fi WAVE app. With an industry leading 70dB gain, the Cel-Fi GO Vehicle is an **ideal solution for vehicles on the road**.

#### Cel-Fi Mobile Donor Antenna:



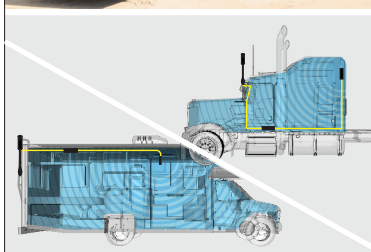
- SMA Male connector
- Omni-directional
- 3m low loss high-performance cable
- Ground plane dependent

\* Screw Mount version available

#### Cel-Fi Mobile Server Antenna:



- 4m length
- Adhesive mount for ease of installation
- SMA Male connector
- Vertical polarization
- 2.5dBi gain



### RV/Truckers Bundle

The Cel-Fi GO Truck/RV bundle includes the Cel-Fi GO Mobile, Cel-Fi Trucker Antenna, and the Cel-Fi Server Antenna. Multi-user and multi-carrier support, plus easy carrier-switching available through the Cel-Fi WAVE app. With an industry leading 70dB gain in mobile mode and 100dB gain in stationary, the GO Truck/RV bundle is an **ideal solution for cross country trucking or remote RV stays**.

#### Cel-Fi Trucker Antenna:

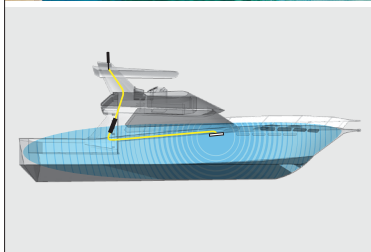


- Heavy-duty spring base
- Mirror mount included for easy installation
- SMA Male connector
- Vertical Polarization
- 4dBi gain

#### Cel-Fi Mobile Server Antenna:



- 4m length
- Adhesive mount for ease of installation
- SMA Male connector
- Vertical polarization
- 2.5dBi gain



### Marine Bundle

The Cel-Fi GO Marine bundle includes the Cel-Fi GO Mobile, Cel-Fi Marine Antenna, and the Cel-Fi Server Antenna. Multi-user and multi-carrier support, plus easy carrier-switching available through the Cel-Fi WAVE app. With an industry leading 70dB gain in mobile mode and 100dB gain in stationary, the GO Marine bundle is an **ideal solution for nearshore or brown water recreational, ferrying or shipping vessels**.

#### Cel-Fi Marine Antenna:



- Weather resistant
- Built-in ground plane
- Threaded ferrule/post for side or bottom cable exit
- High-performance, omni-directional antenna

#### Cel-Fi Mobile Server Antenna:



- 4m length
- Adhesive mount for ease of installation
- SMA Male connector
- Vertical polarization
- 2.5dBi gain

# Specifications

**Versions Available** Mobile: GO unit + 12V CLA adapter  
Stationary: GO unit + AC adapter

**Power** 9.6 to 28.8 VDC via external supply  
External supply: 100 to 240 VAC, 47 – 63Hz  
Power consumption less than 15W per unit\*

**Antenna Requirements** 50ohm antenna matching  
Antenna cables require SMA-Male connectors  
VSWR <2:1  
Antennas should support appropriate device band frequencies

**Environmental** Ambient operating temperature: 0° to 65°C  
Storage temperature: -25° to 65°C  
Relative humidity: 0% to 95%, noncondensing  
RoHS II 2011/65/EU  
WEEE (2002/96/EC)  
ErP 2009/125/EC

**Physical Specifications**

| GO Mobile    |
|--------------|
| 255x87x28 mm |
| (600g)*      |

SMA Female Donor Antenna Connector (50 ohm)  
SMA Female Service Antenna Connector (50 ohm)  
IP54 Rated

**Standards\***

|                      |                               |
|----------------------|-------------------------------|
| R&TTE 1999/5/EC      | EN 60950-1:2006+A11/A12/A1/A2 |
| R&TTE 1999/519/EC    | RCM Mark                      |
| EN 301 489-17, 23    | CE Mark                       |
| EN 301 908-1, 11, 15 | CISPR 25                      |
| EN 300-328           | ISO 763702                    |
| EN 62311             | 3GPP TS 25.143 Rel.10         |
| R-NZ                 |                               |

**Note:** Certifications are regional; not all versions need or have the same certifications. Please check the specific model to determine exactly which certifications it has.

| Antenna Options  |   |
|--|---|
|  <p><b>Cel-Fi Whip Antenna</b><br/>A21-V33-100</p>            |  <p><b>Cel-Fi Marine Antenna</b><br/>A11-V37-100</p>   |
|  <p><b>Cel-Fi Mobile Mag Mount Antenna</b><br/>A41-V21-10</p> |  <p><b>Cel-Fi Trucker Antenna</b><br/>A21-V31-100</p> |
|  <p><b>Cel-Fi Mobile Server Antenna</b><br/>A41-V30-100</p>  |   |

| RF Specification                  | Band Specific Radio            |                                |                                |                                |                                |
|-----------------------------------|--------------------------------|--------------------------------|--------------------------------|--------------------------------|--------------------------------|
| Model Number                      | Band 3                         | Band 5                         | Band 8                         | Band 28 (L)                    | Band 28 (U)                    |
| G31-3/5/28                        | Yes                            | Yes                            | -                              | Yes                            | -                              |
| G31-3/8/28L                       | Yes                            | -                              | Yes                            | Yes                            |                                |
| G31-3/8/28U                       | Yes                            | -                              | Yes                            | -                              | Yes                            |
| Frequency DL (MHz)                | 1805 - 1880                    | 869 - 894                      | 924 - 960                      | 758 - 788                      | 773 - 803                      |
| Frequency UL (MHz)                | 1710 - 1785                    | 824 - 849                      | 880 - 915                      | 703 - 733                      | 718 - 748                      |
| Duplex Distance (MHz)             | 95 MHz                         | 45 MHz                         | 45 MHz                         | 55 MHz                         | 55 MHz                         |
| Maximum Relay Bandwidth (MHz)     | 20 MHz                         | 15 MHz                         | 20 MHz                         | 20 MHz                         | 20 MHz                         |
| UL TX Power Max (Conducted) (dBm) | 22dBm                          | 20dBm                          | 20dBm                          | 20dBm                          | 20dBm                          |
| DL TX Power Max (Conducted) (dBm) | 10dBm per 5 MHz<br>(16dBm max) | 10dBm per 5 MHz<br>(15dBm max) | 10dBm per 5 MHz<br>(16dBm max) | 10dBm per 5 MHz<br>(16dBm max) | 10dBm per 5 MHz<br>(16dBm max) |